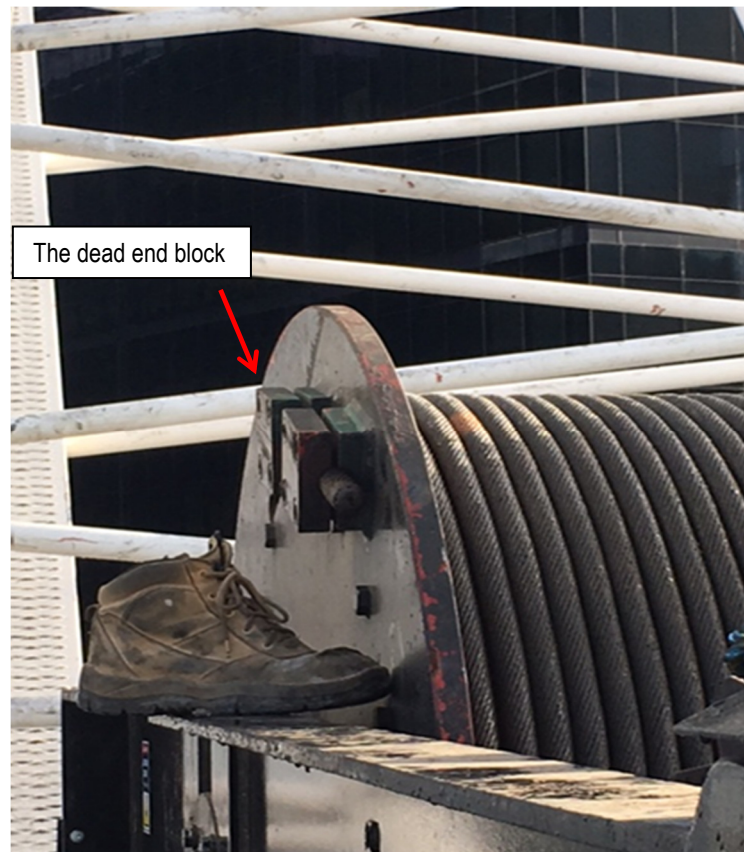


# MULTIPLEX

## SOMETIMES THERE'S NO SECOND CHANCE

### PINCH POINTS AND CRANE LOADS

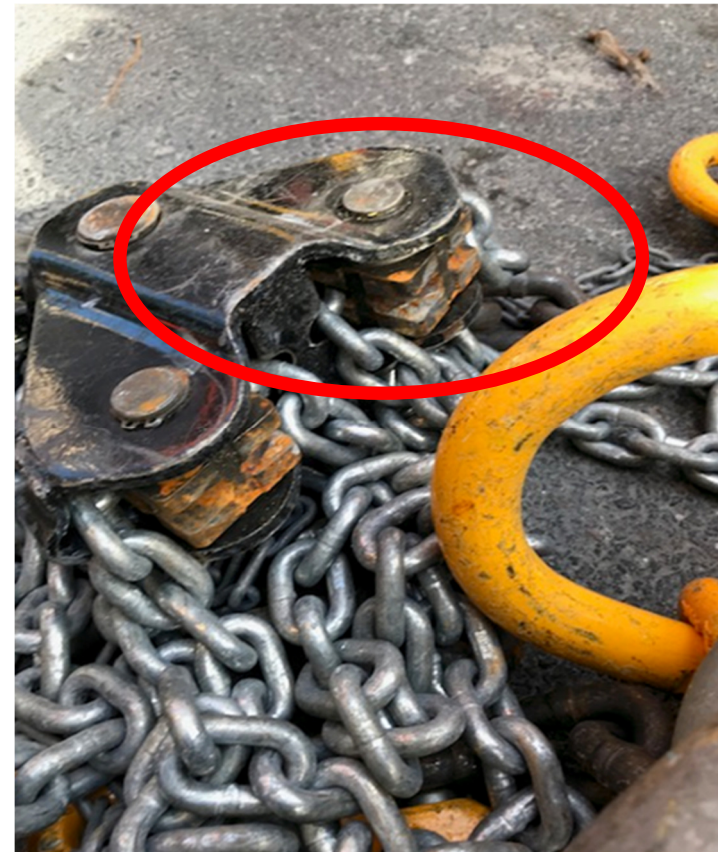
Over the past few years a number workers have suffered serious injuries whilst manoeuvring crane loads. The injuries include serious lacerations, partial amputation of fingers or in one particular case the amputation of a toe. The following case studies highlight the impact and damage pinch points can cause to the workers involved manoeuvring crane loads.



The worker's foot was wedged between the hoist rope dead end clamp on the side of the winch, and winch frame. The force caused a serious injury to the worker's right foot eventually resulting in a toe being amputated.



The worker was assisting in emptying the concrete kibble when his hand became trapped between the handle and body of the kibble. The worker suffered a serious hand injury that required surgery.



The worker has tried to release the chain that had snagged in the chainblock during a lift. The chain suddenly released and the worker's hand was trapped between the 4 fall roller and guard. The worker's finger was eventually amputated.



The worker was assisting the jumpform installer when he placed his fingers between and the truss and the jack. The sudden movement of the jack resulted in his ring finger being crushed. The tip of the finger was eventually amputated.