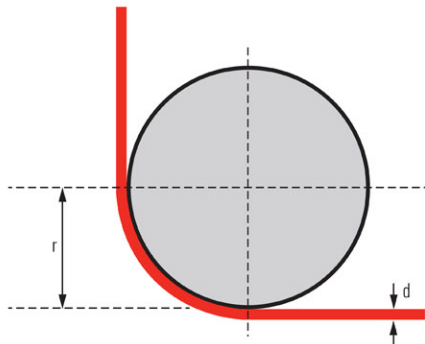


Safe Use of Synthetic Lifting Slings What Do I Need To Know?



Definition of Sharp Edges Relating to Attachment Fittings (Hooks, Shackles, Masterlinks etc)

What is a sharp edge?

If the radius (r) of the edge of the fitting is the same or less than the compressed thickness (d) of the sling.

Definition of Sharp Edges Relating to Attachment Directly to Loads (Choke, Basket etc)

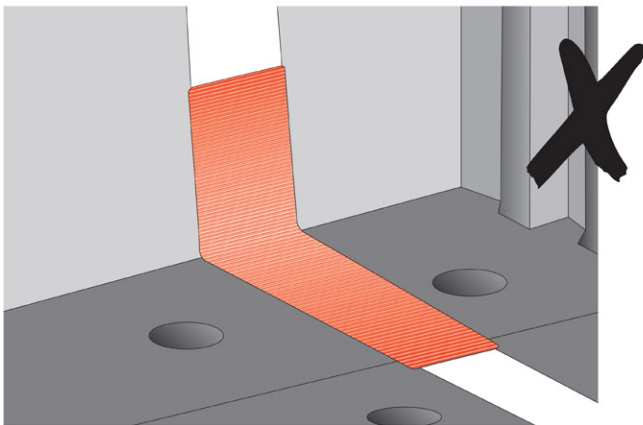
What is a sharp edge?

If the radius (r) of the edge of the load is less than 3 times the compressed thickness (d) of the sling (AS4497).

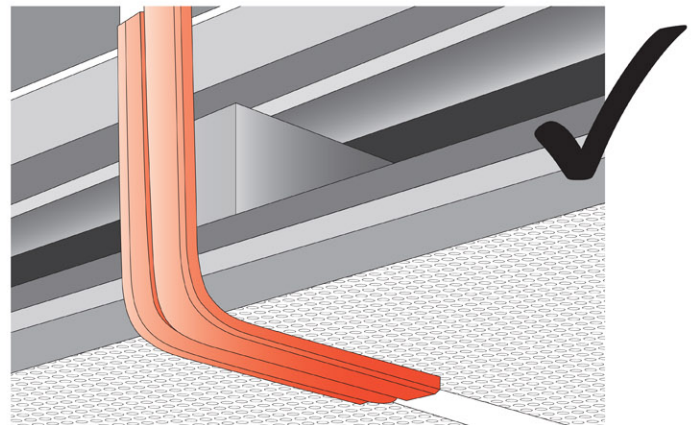
PROTECTION FROM SHARP EDGES IS CRITICAL!

Protective Sleeves Come in Two Varieties

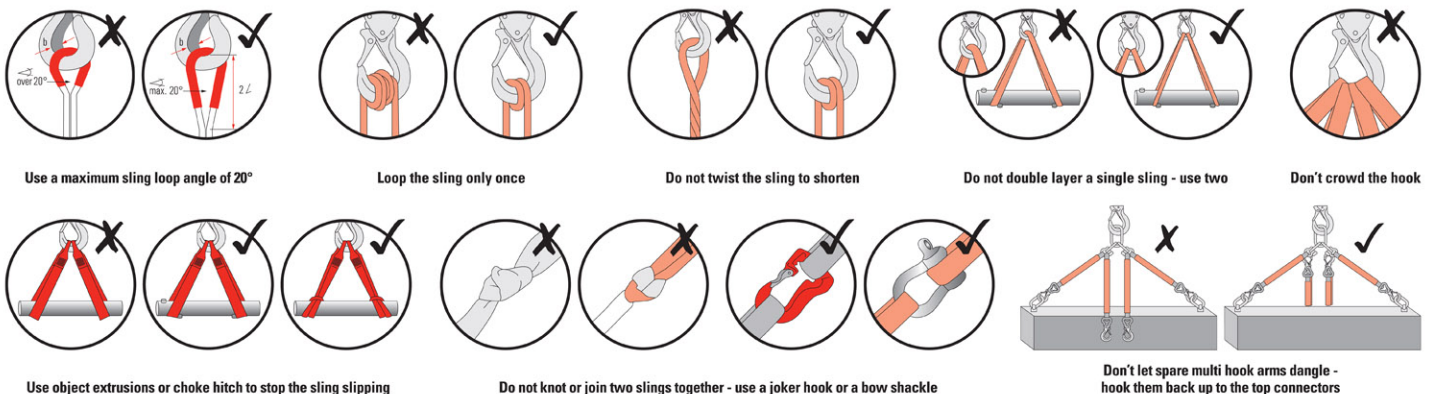
Abrasion Protective Sleeves (webbing, pvc, leather)
DO NOT USE FOR CUT PROTECTION



Cut Protective Sleeves (polyurethane, secutex®)
FOR CUT PROTECTION AND ABRASION



Sling Use Dos and Don'ts



If you do not understand these guidelines you need training!