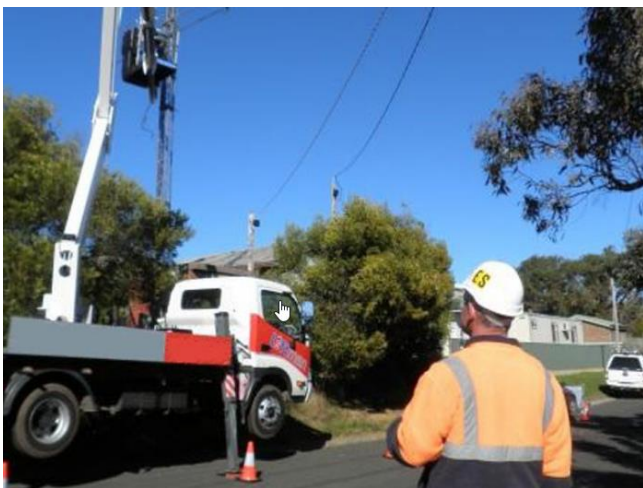


Greetings all. Today's topic is about Spotters.

Spotters are a crucial part of many lifts, particularly those involving overhead electrical assets. Whether it's high voltage or not, the consequences of contact are extremely high especially for the dogman as he is usually holding the load or a tagline which creates a path for the electricity to reach the ground.



The dogman himself cannot be the spotter as his job is to control and land the load, which of course, involves looking at the load and hazards around it rather than up in the air at the boom. It's even more important on pick and carry cranes as they can come into contact with electrical hazards by not only luffing up but by traveling with the load (especially backwards).



Where a spotter is to be used, the contractor must ensure they are properly inducted into all site safety procedures including the relevant Safe Work Method Statement (SWMS).

The spotter must remain at the task for the entire time the crane is operating in accordance with the SWMS. The spotter may only observe one crane or piece of operating equipment at any time, so their attention is always focused.

The spotter must also be carefully positioned, so they can monitor the distance between the crane/equipment and any nearby power lines. They must provide early and effective warning to the crane operator of any potential encroachment on the No Go Zone. (Refer bulletin 207)

Spotters for overhead electrical lines shall have completed an endorsed spotter training course by a registered training provider and be competent in the design envelopes for the equipment/plant being used. And be familiar with the actual lift plan for operation including any traveling or crawling with the load.

The General Requirements given by EnergySafe Victoria for working as a spotter are as follows:

1. A person must have a current competency to "Provide First Aid" (HLTAID003) or equivalent competency; and
2. A person must hold a current competency to "Provide Cardiopulmonary Resuscitation" (HLTAID001) or equivalent competency; and
3. A person must have undertaken an approved Spotter training course (22325VIC) (Course in Workplace Spotting for Service Assets) and hold an appropriate Spotters Registration Certificate/ Card which is valid for a period of three (3) years.
4. A trained Dogman / Rigger may act as a spotter for any type of plant (without holding a ticket or demonstrate competence and experience for that item of plant), subject to compliance with items 1, 2 and 3 above.
5. For all other plant and equipment, a person must hold a Certificate of Competency or WorkSafe ticket for the item of plant that person will be spotting.

I've written this bulletin to highlight the importance of the spotter role and to raise awareness to all (including spotters themselves), that although it's not a 'hands on' role, it's every bit as important because the crane crew's life (and that of anyone within 10 meters), is very much in the hands of the spotter. In this day and age, distractions come in many forms including everything from the phone in your pocket to the personnel and machinery operating around you. A momentary lapse in concentration can have devastating consequences so let's all do our bit and stay focused!

Stay Safe -CICA