

Greetings All,

Happy New Year and welcome to 2016. Hopefully everyone has had some time to relax with family and friends and reflect on how this year will be bigger and better than the last.



As the new calendars go up on the wall to replace last year's version, are there any New Year resolutions that you have made with regard to work? Hopefully all of us have already made some safety related decisions that aim to increase our safety, and those of the people around us in the workplace and also at home.

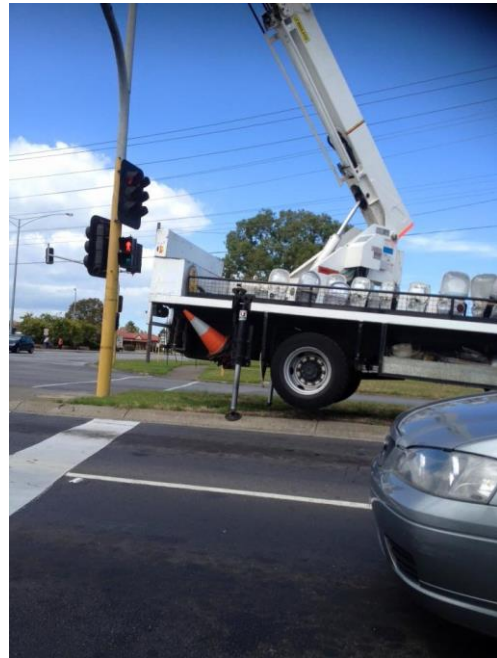
In the lead up to Christmas last year, there was a terrible accident involving a large truck mounted elevated work platform. Shortly after the tragic accident, Qld Workplace Health and Safety issued a Safety Alert regarding the support of mobile plant on outriggers, with particular mention of being aware of soft ground.



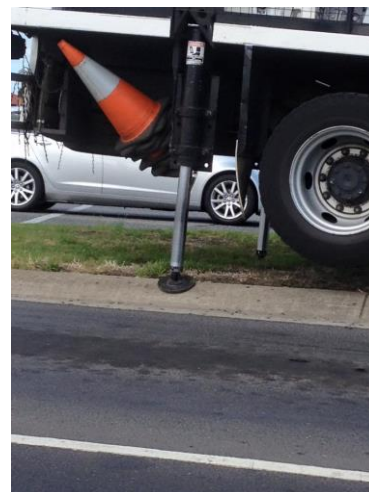
The photo above is from the QLD WHS Safety Alert which can be found at this link:

<https://www.worksafe.qld.gov.au/news/safety-alerts/whsq/2015/support-of-mobile-plant-on-outriggers#contributing>

A week into the New Year and only two weeks after the alert was issued by Qld WHS, these pictures surfaced of a similar machine being operated in Melbourne.



Whilst the size of the machine maybe a little smaller, the end result could easily be the same. Outriggers and stabilizers on cranes are not there for sitting on when things are quiet; they are an integral part of the safety of the machines they are attached to, regardless if it is a mobile crane, an EWP or telehandler etc – They should be used correctly!



*The likelihood of that outrigger foot slipping on the concrete curbing is fairly high if the machine is subjected to rough operating – which one may assume is highly likely considering the way the machine is set up.*

Please share these pictures with your workmates – we are all responsible for our safety and the safety of the people around us.

Cheers for now and have a safe day !

Brent Stacey [www.cica.com.au](http://www.cica.com.au)